

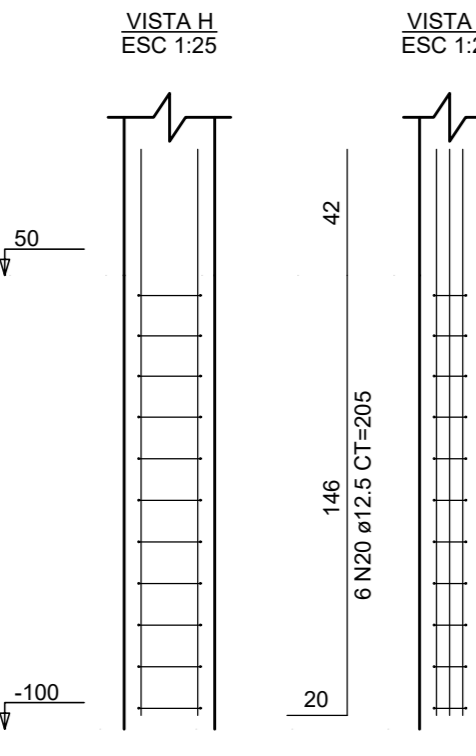
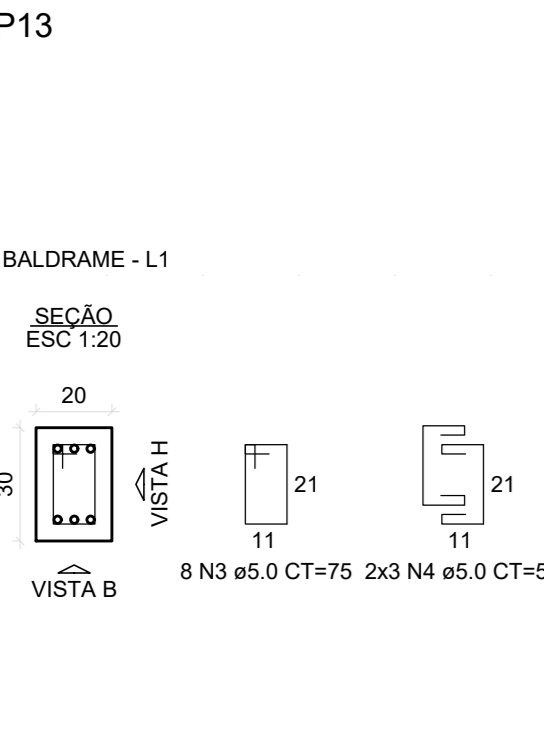
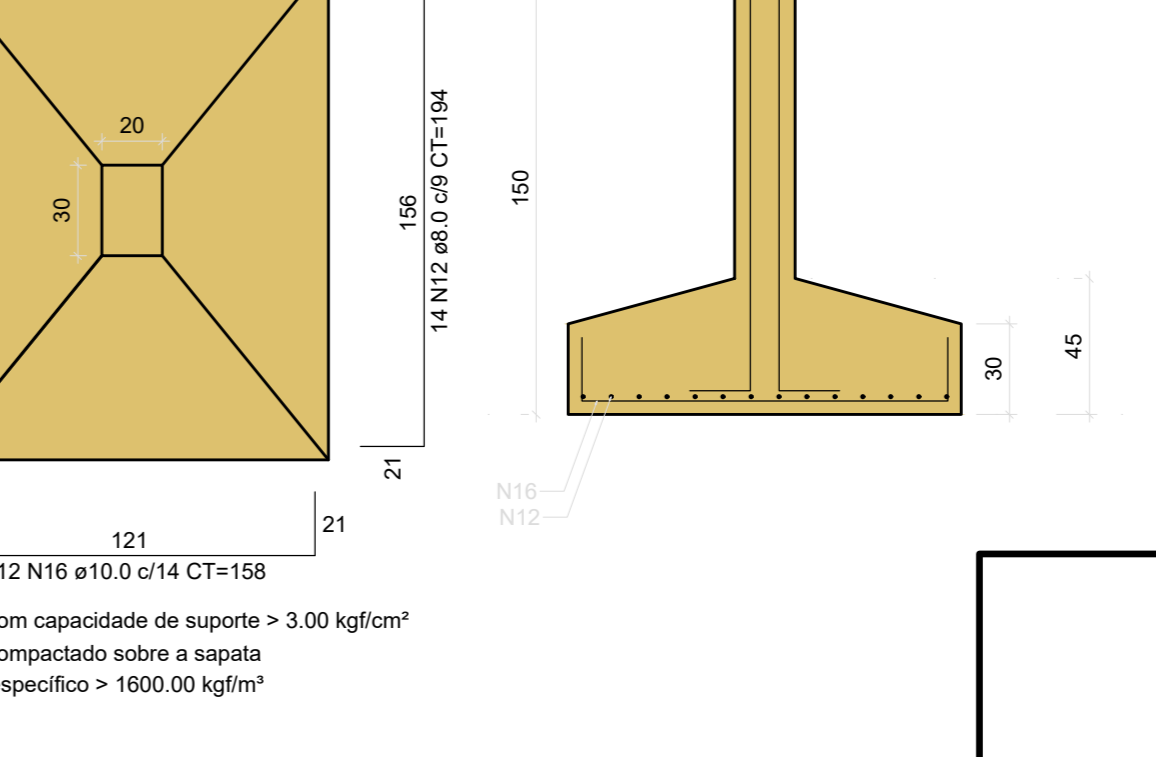
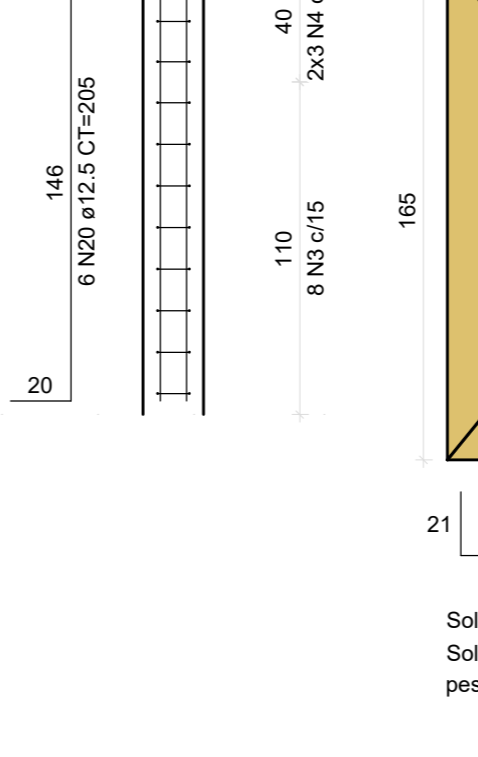
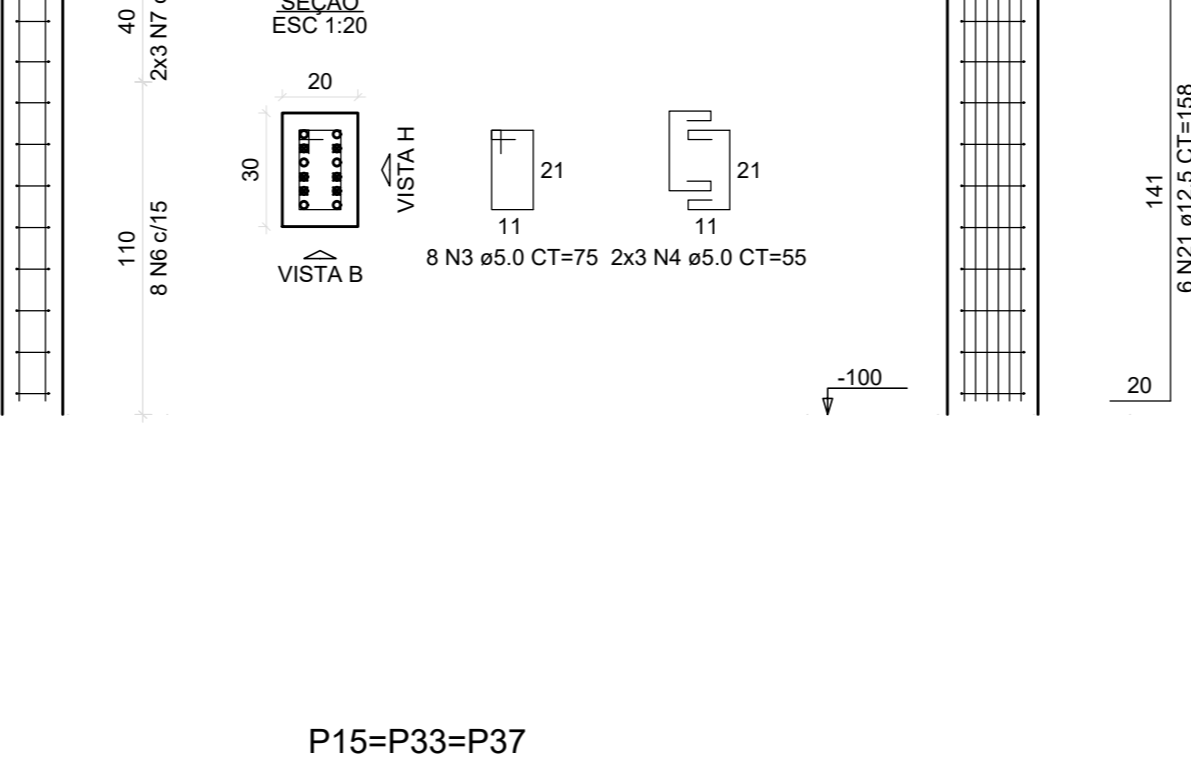
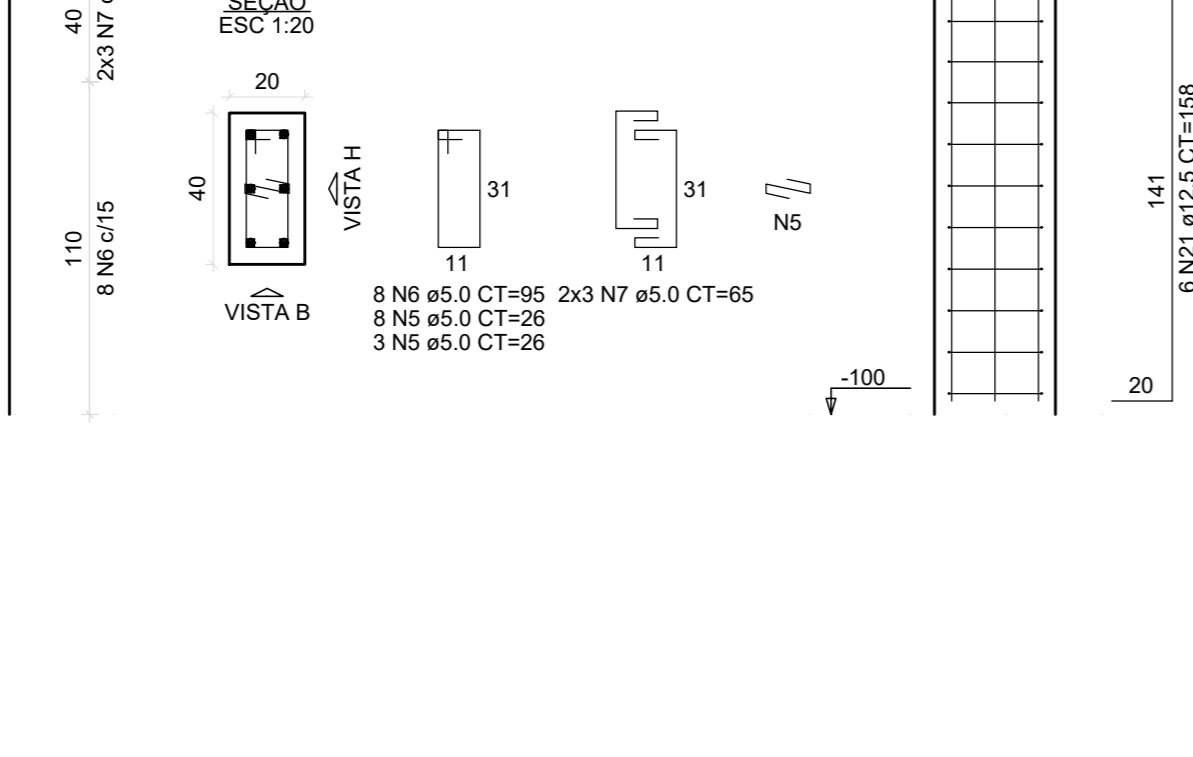
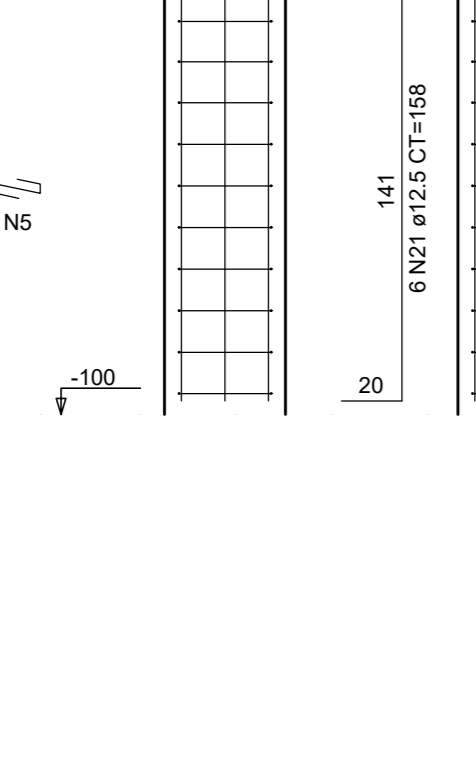
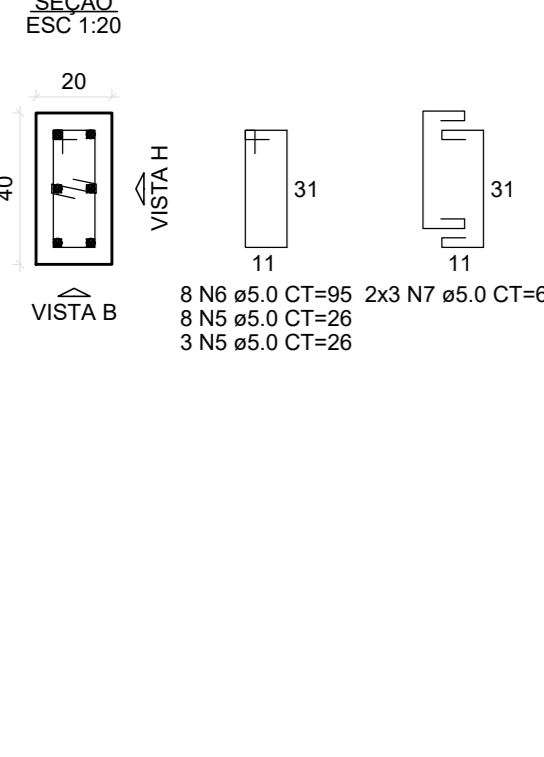
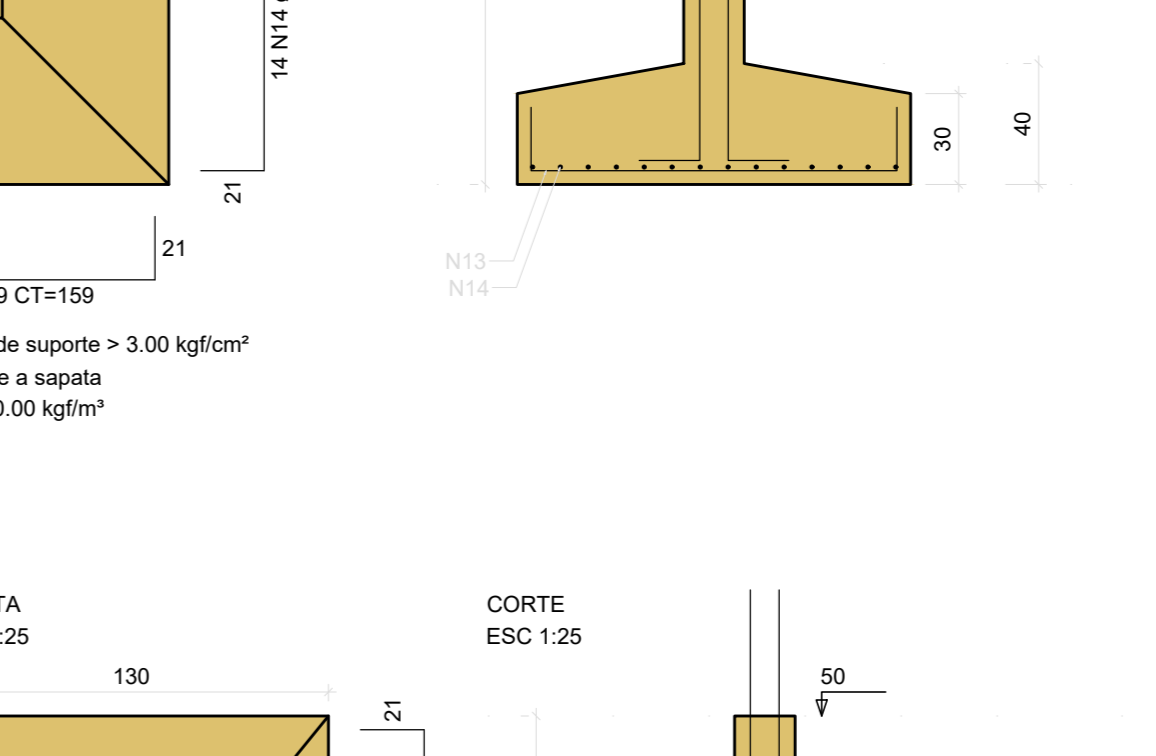
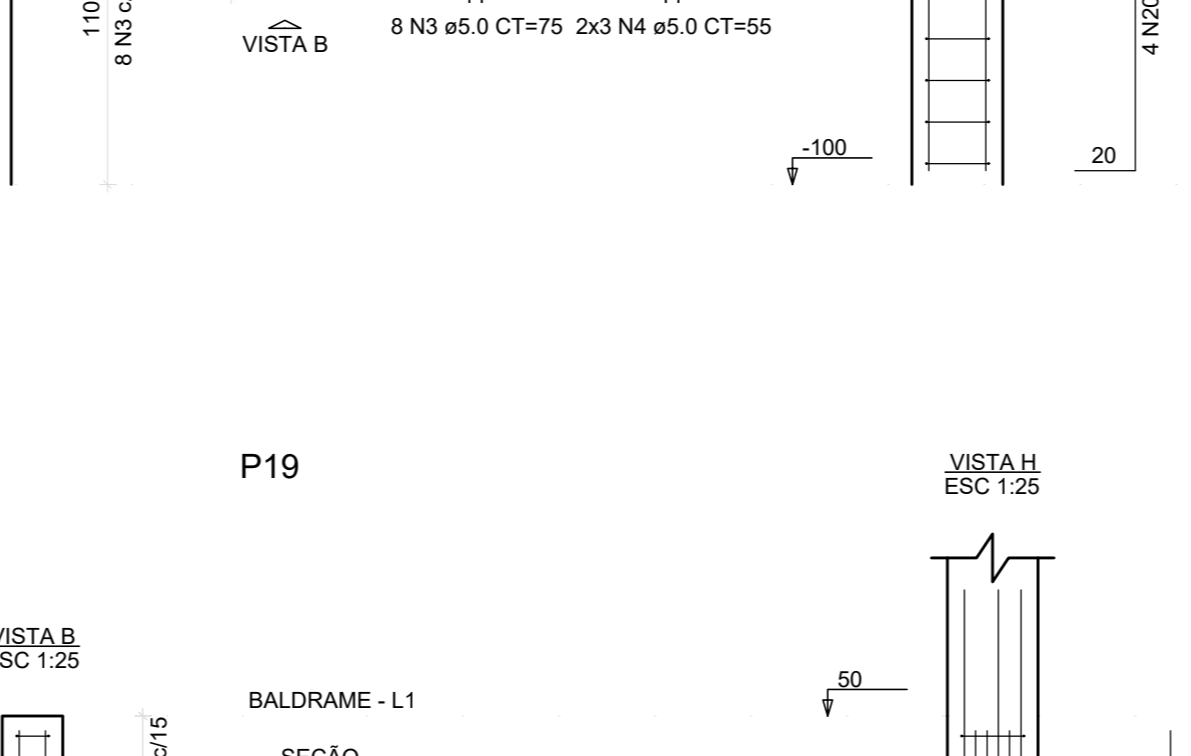
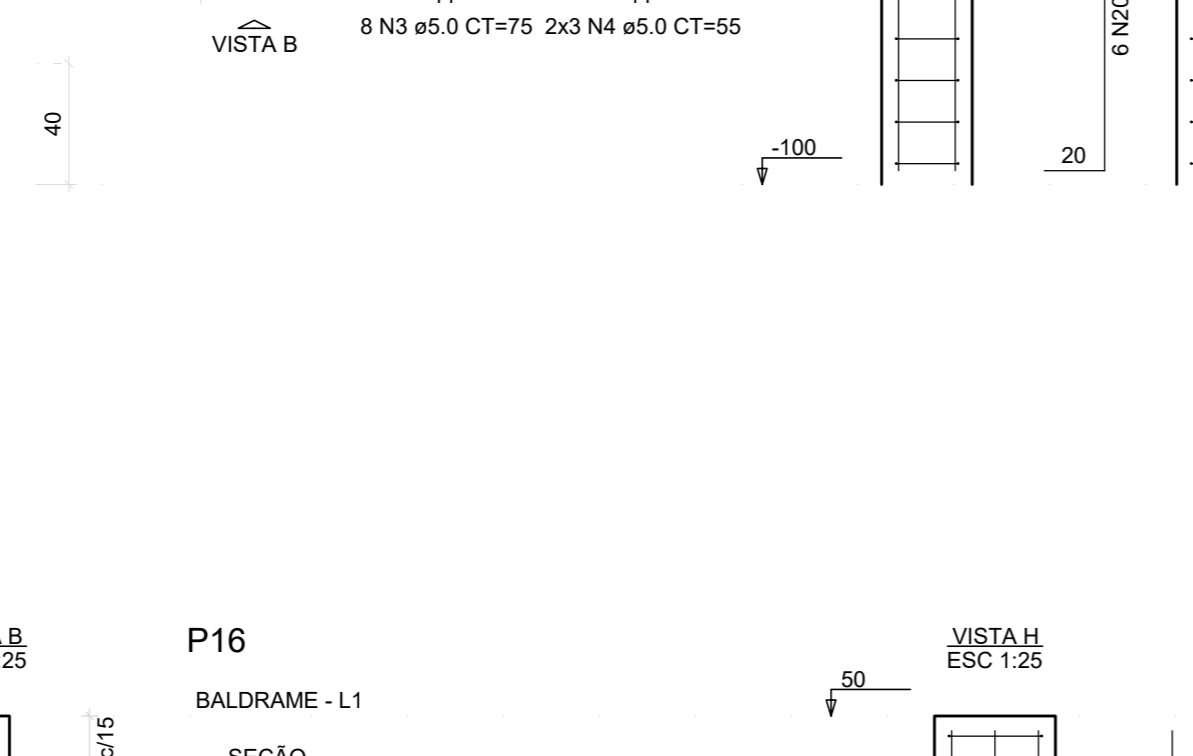
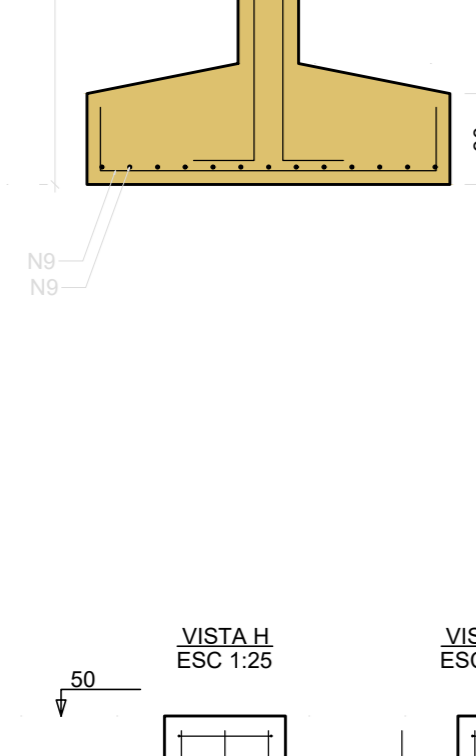
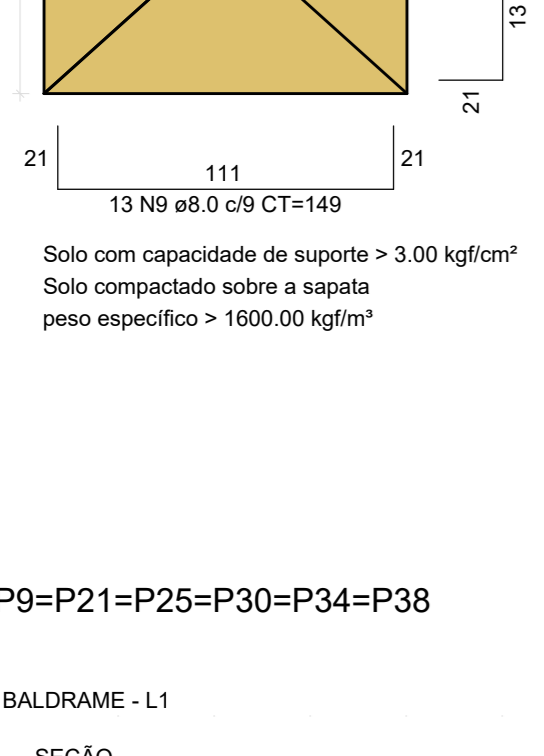
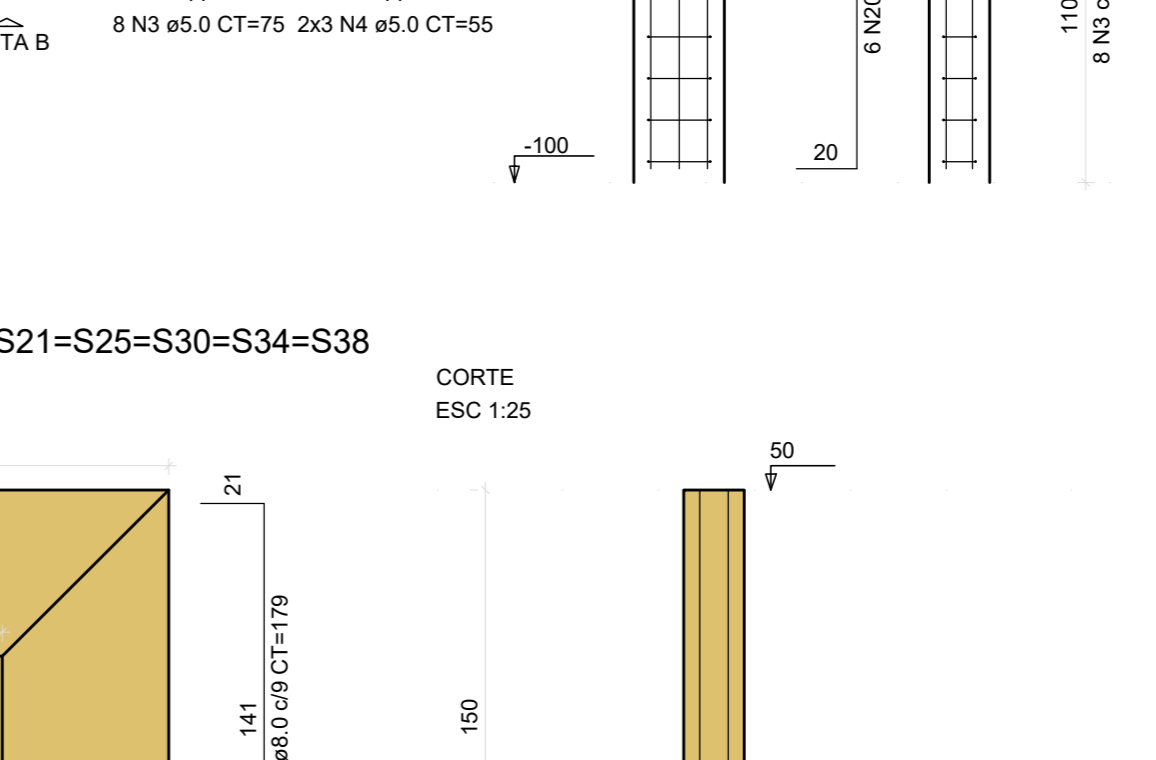
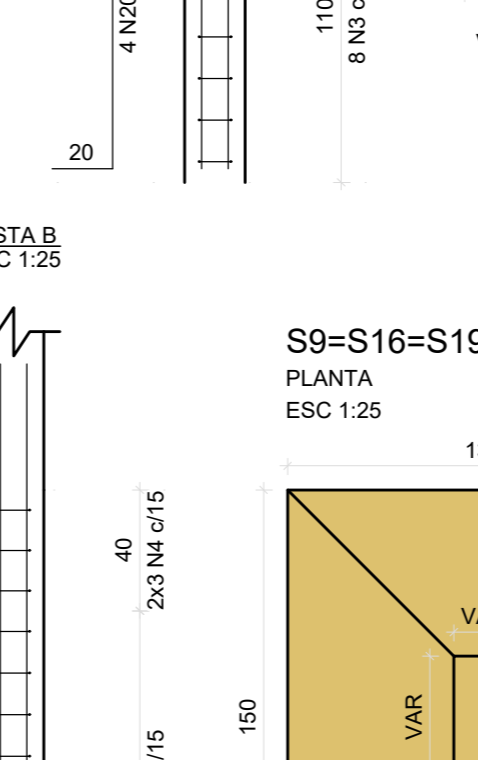
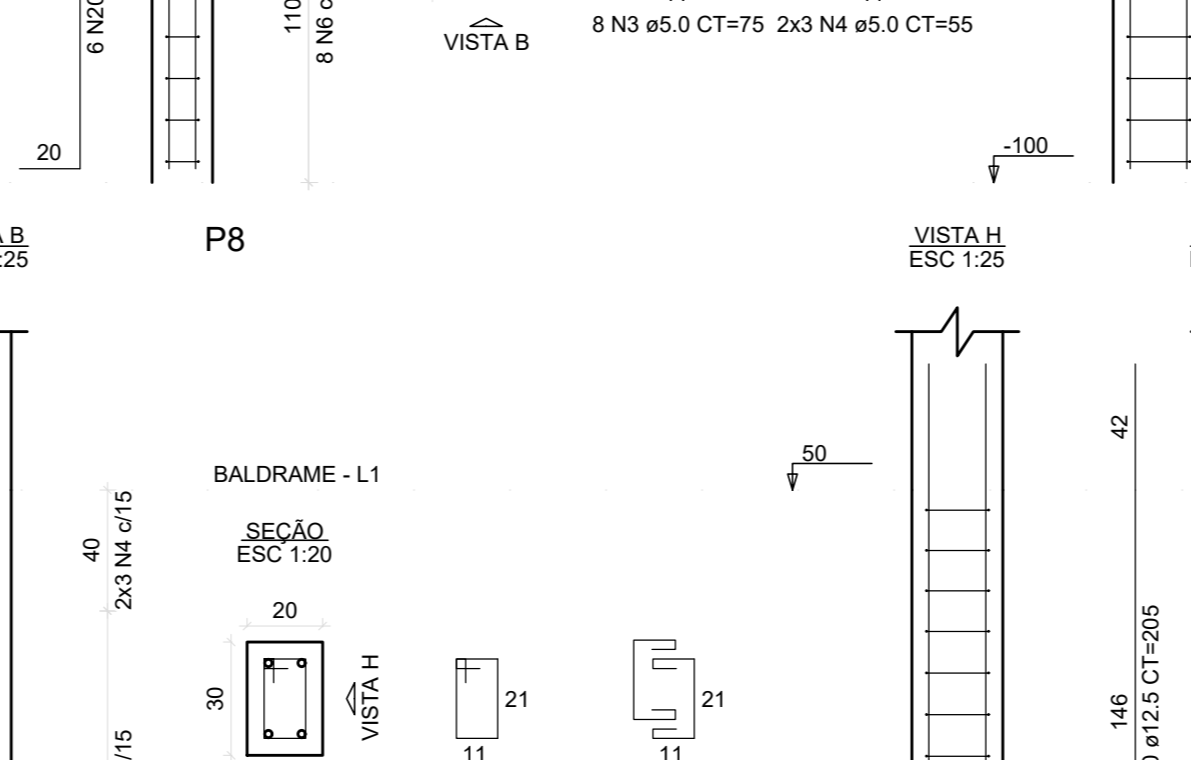
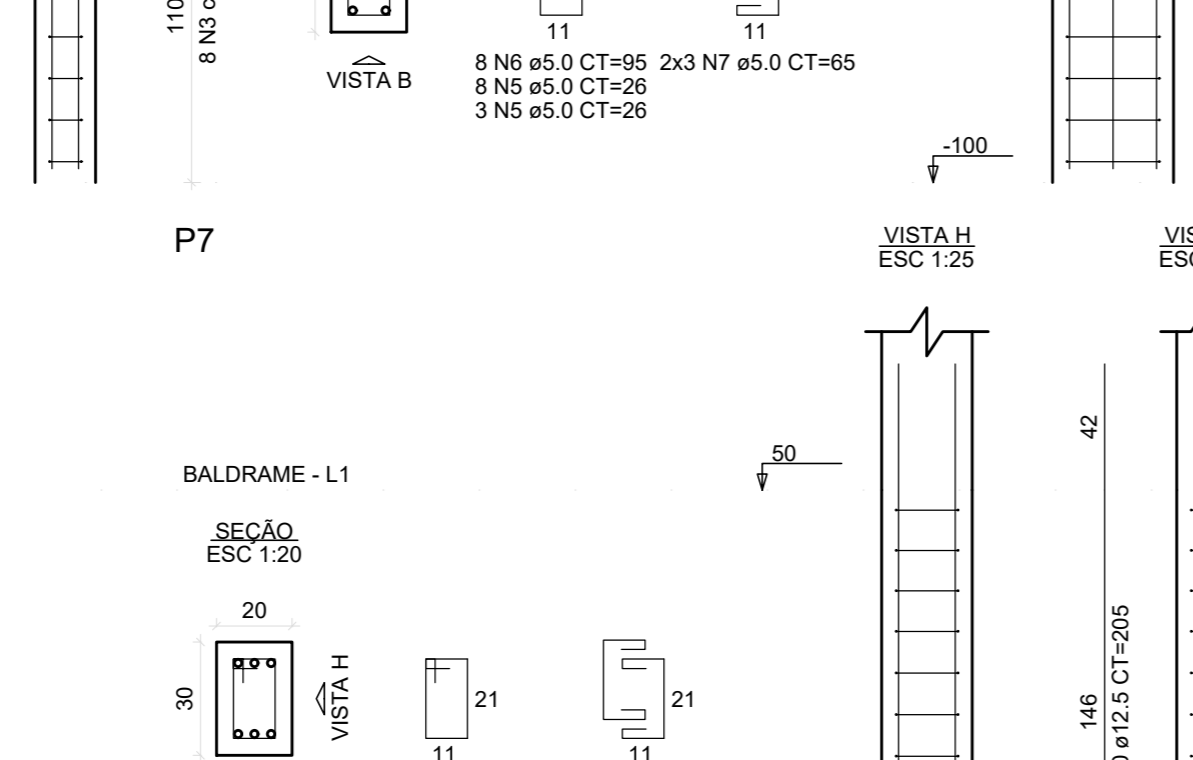
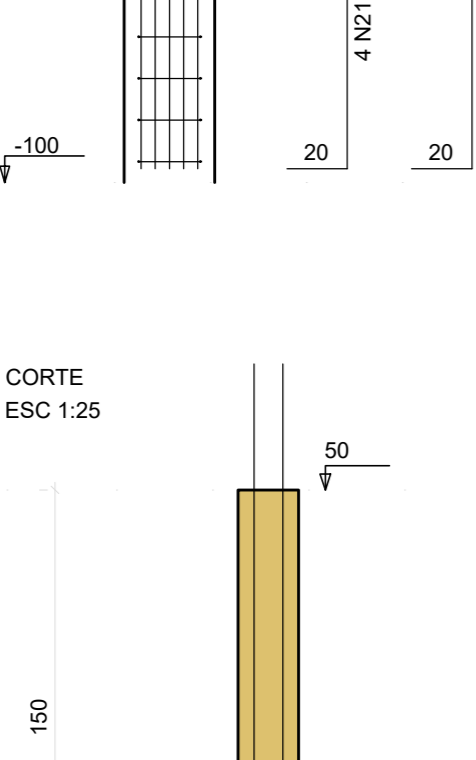
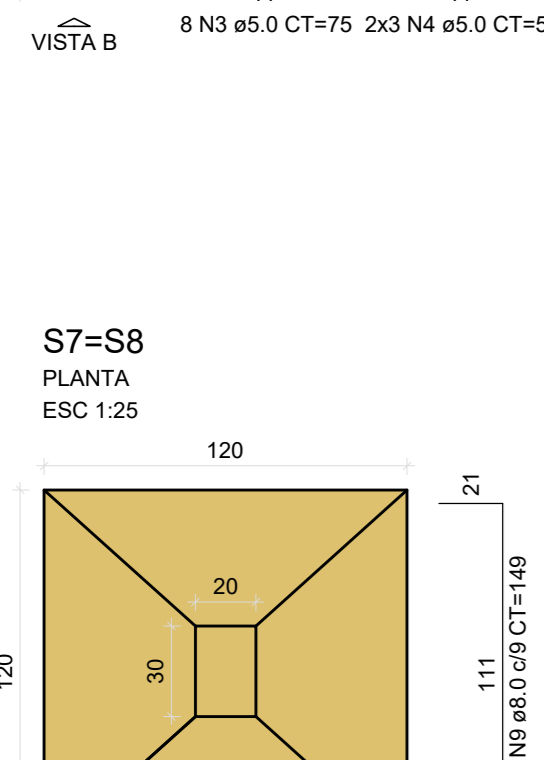
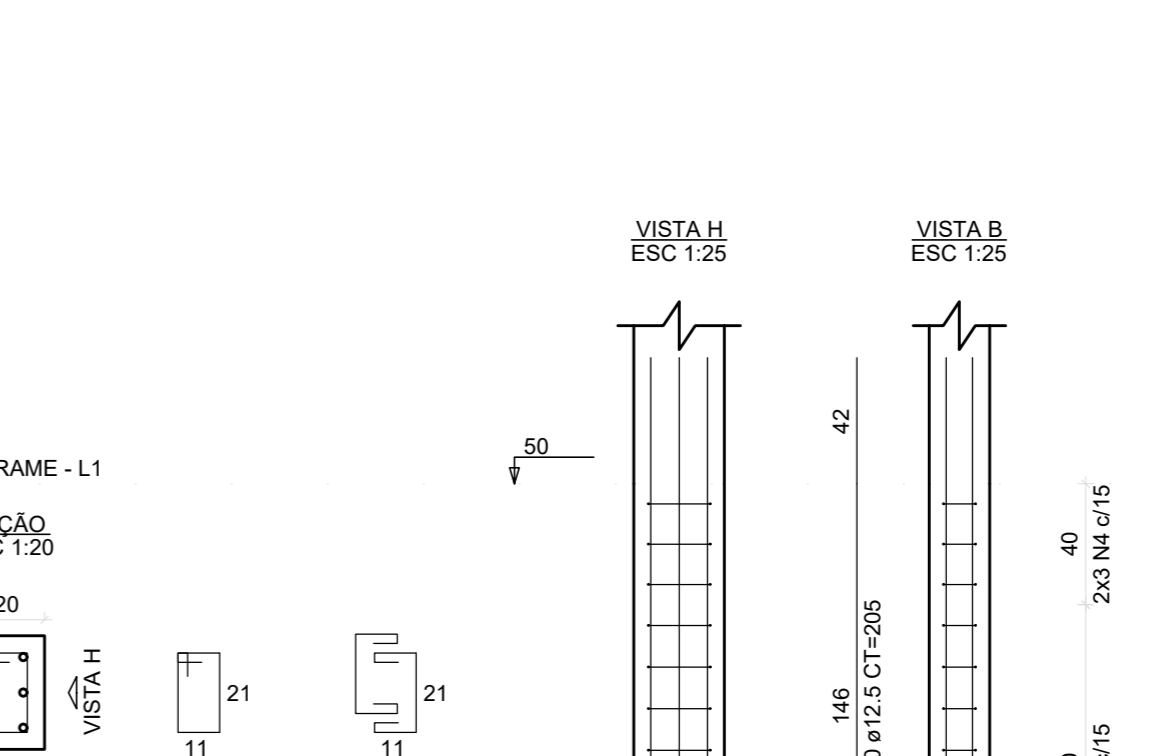
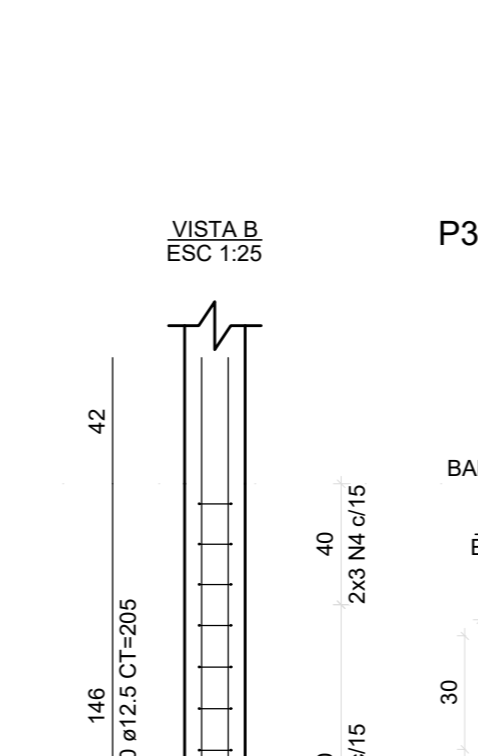
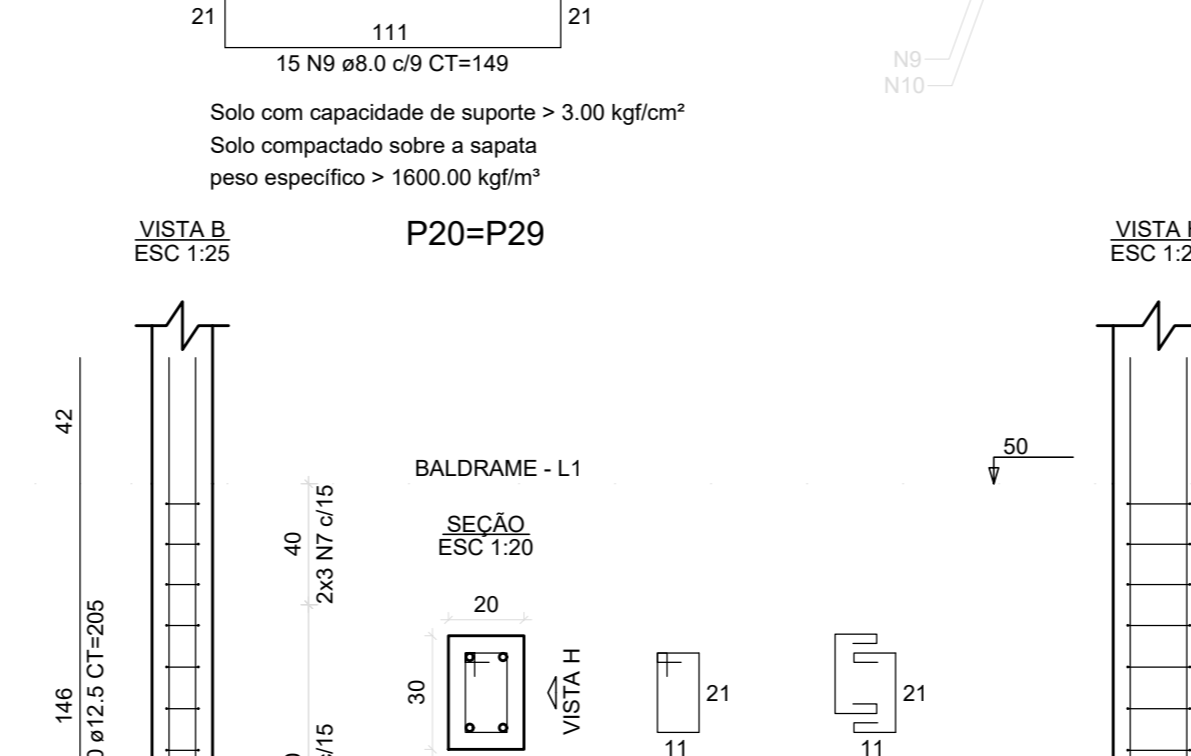
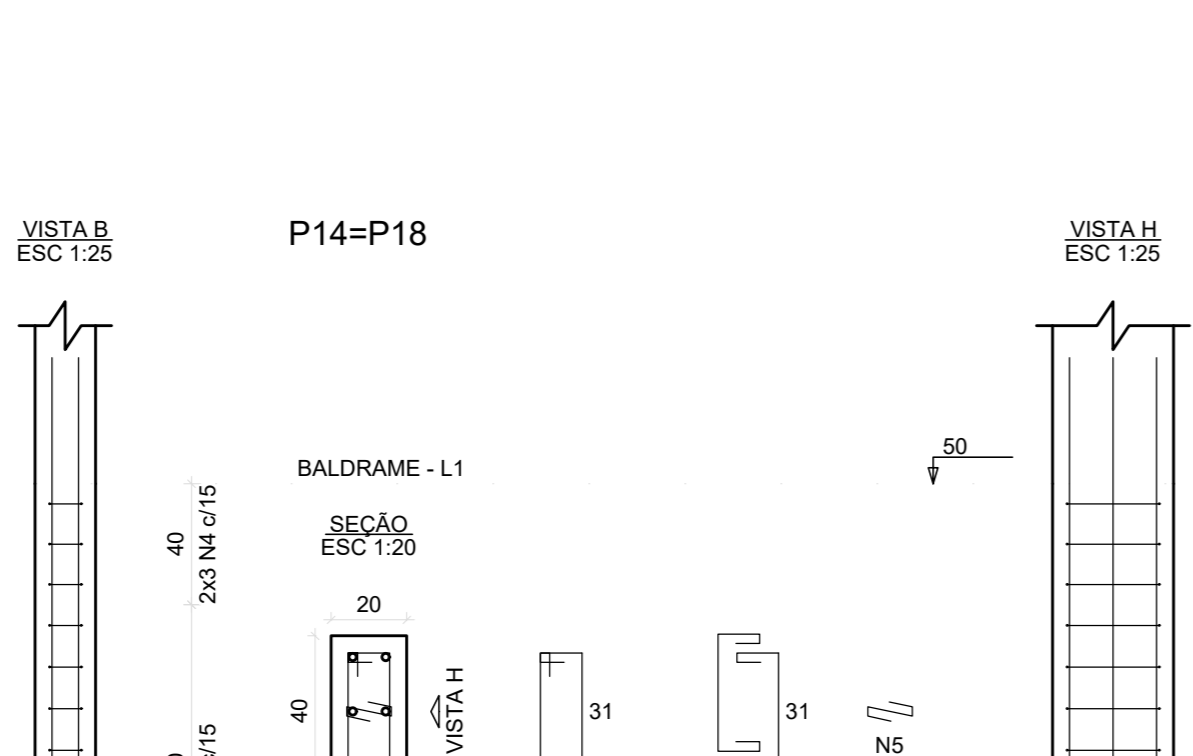
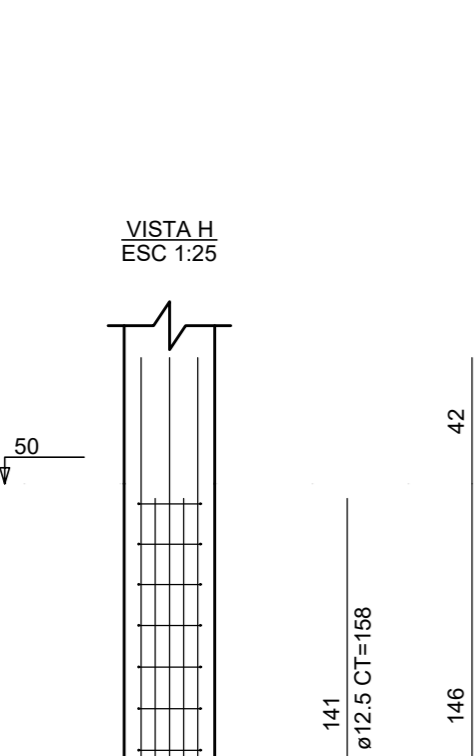
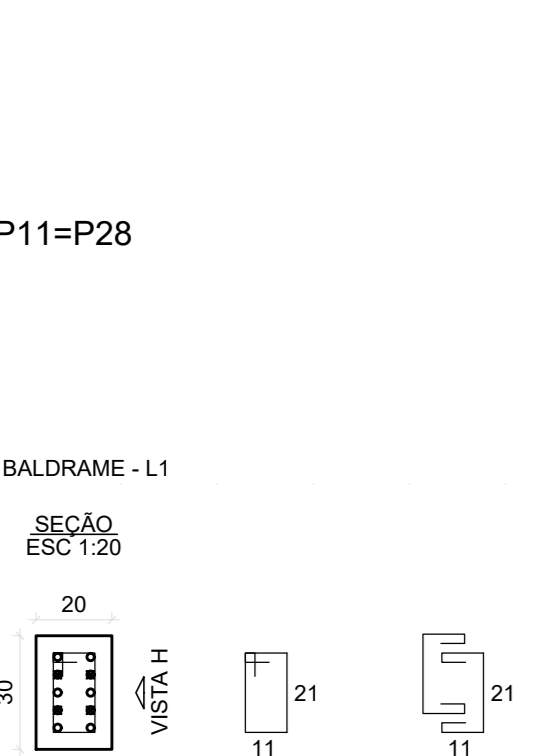
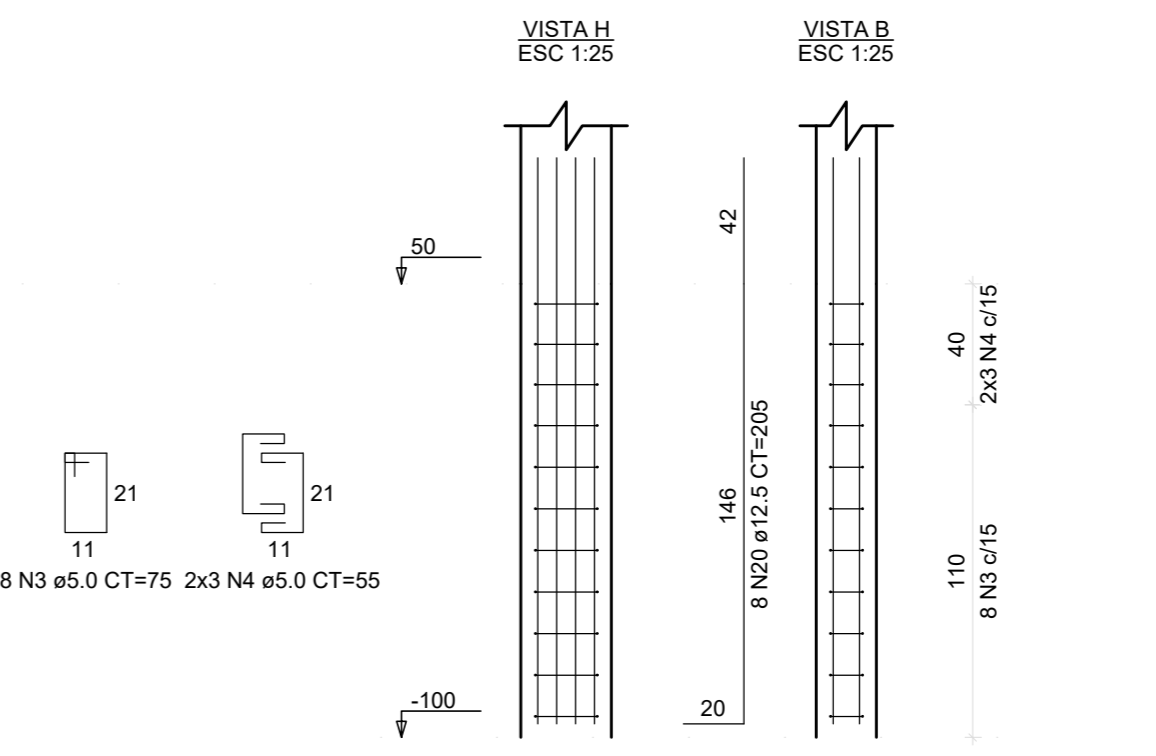
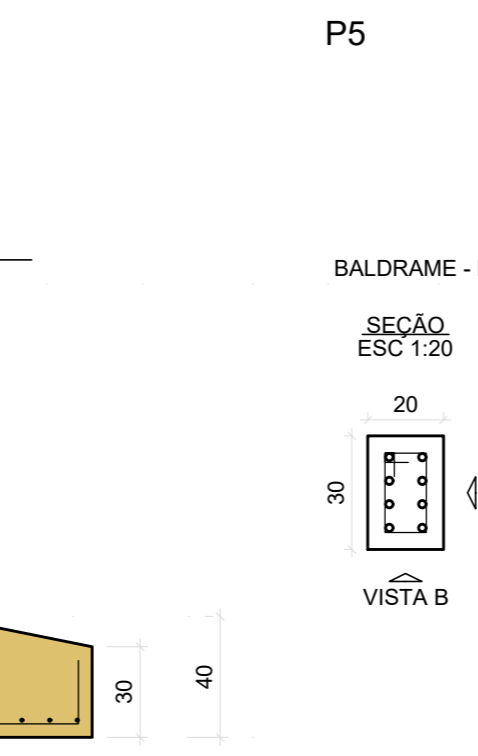
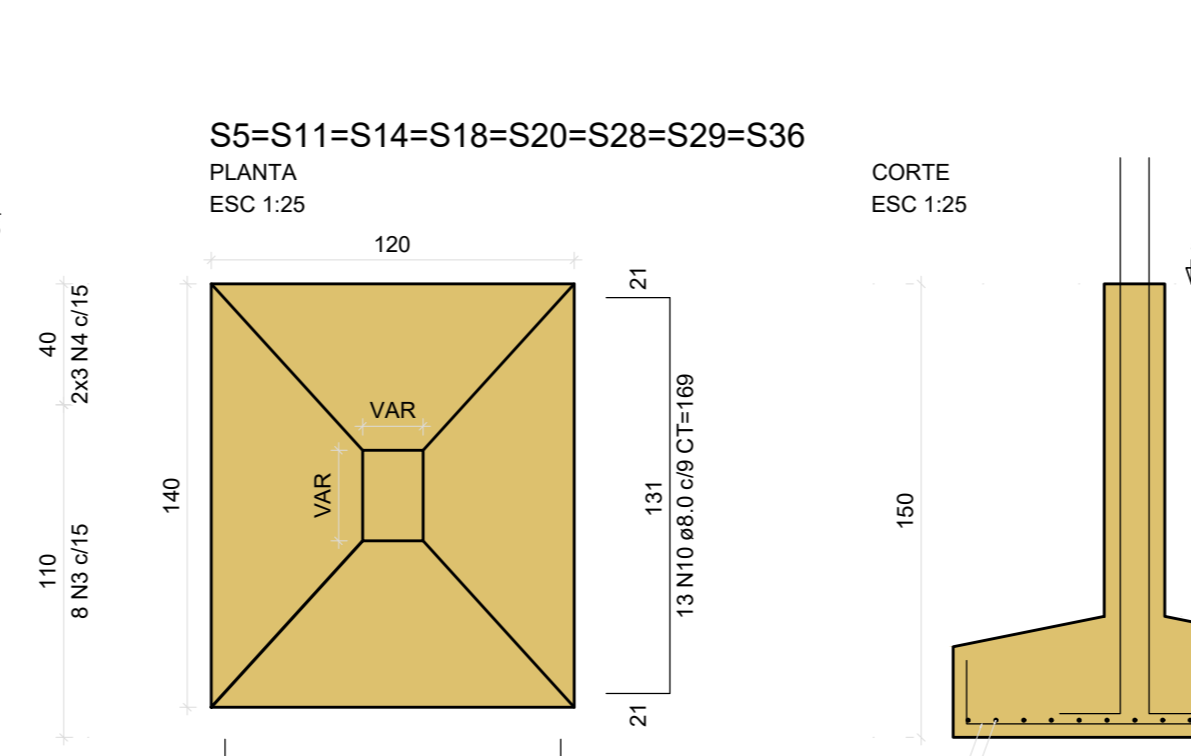
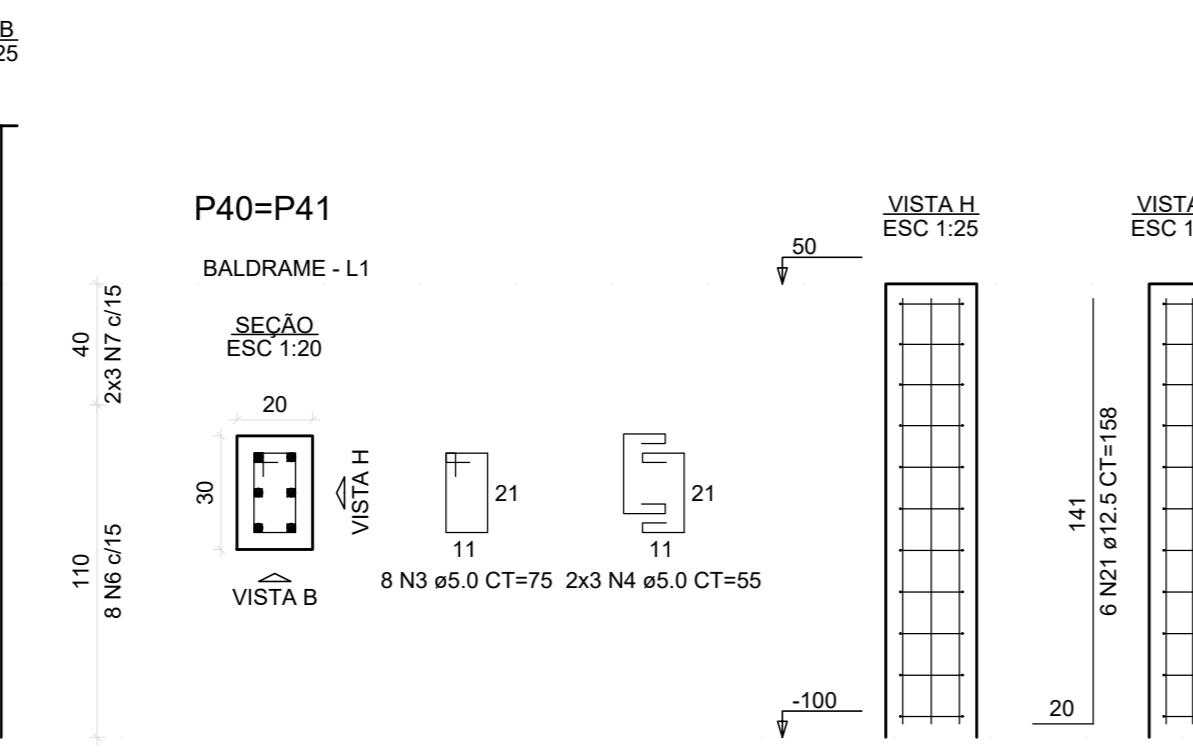
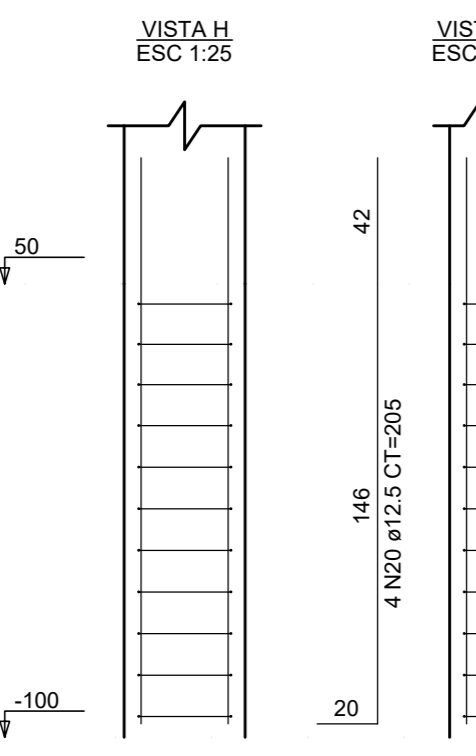
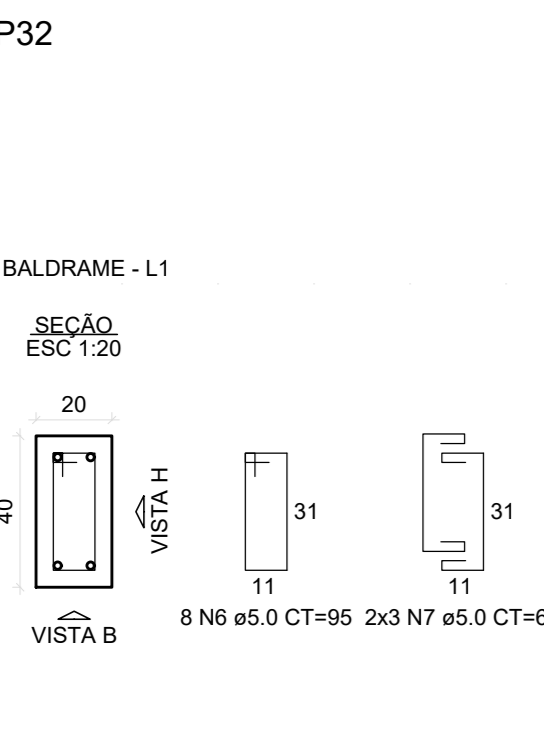
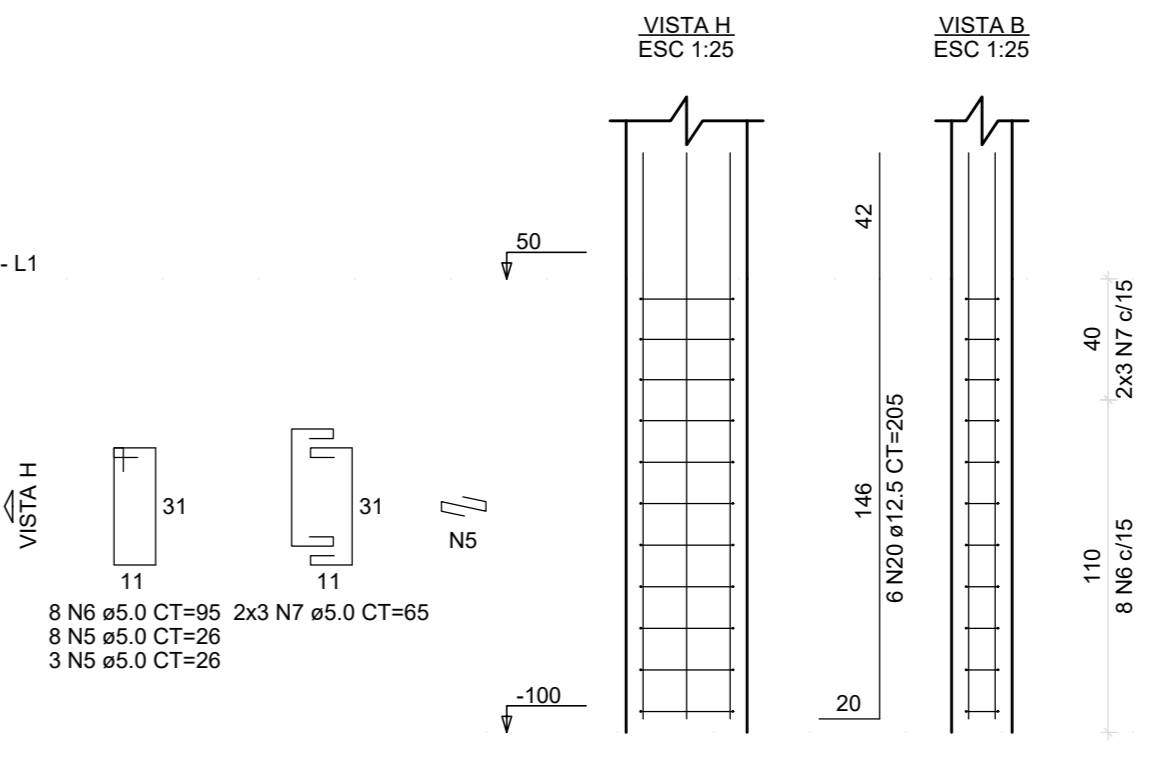
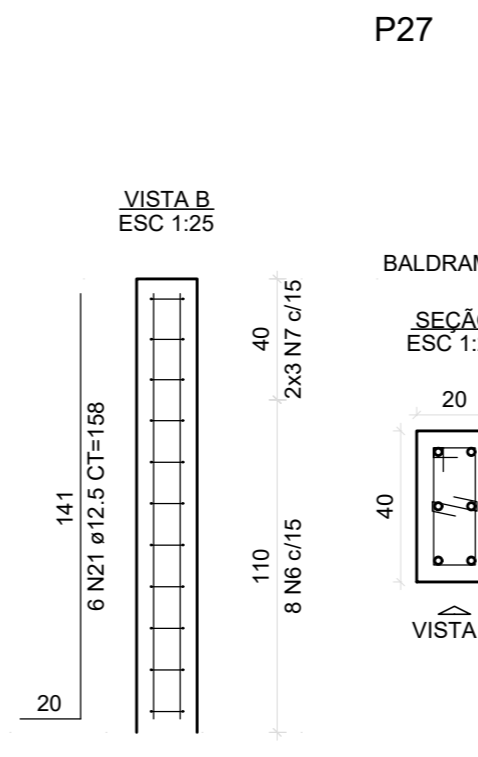
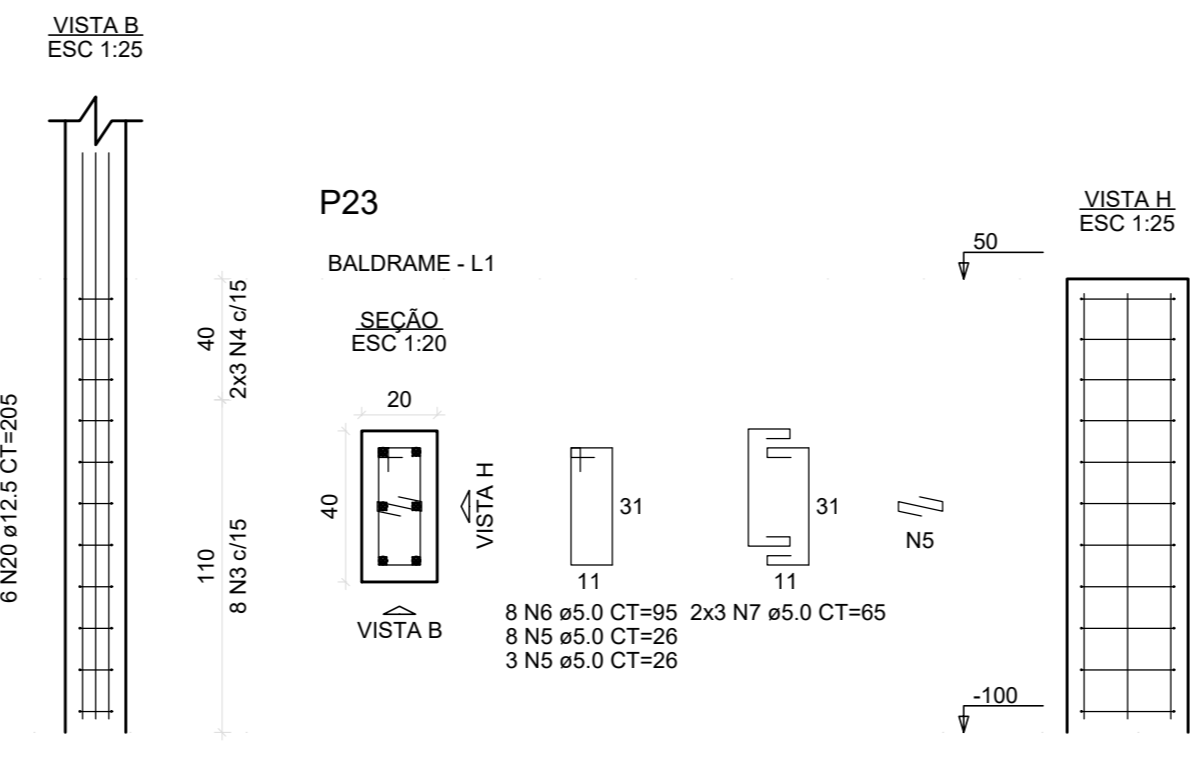
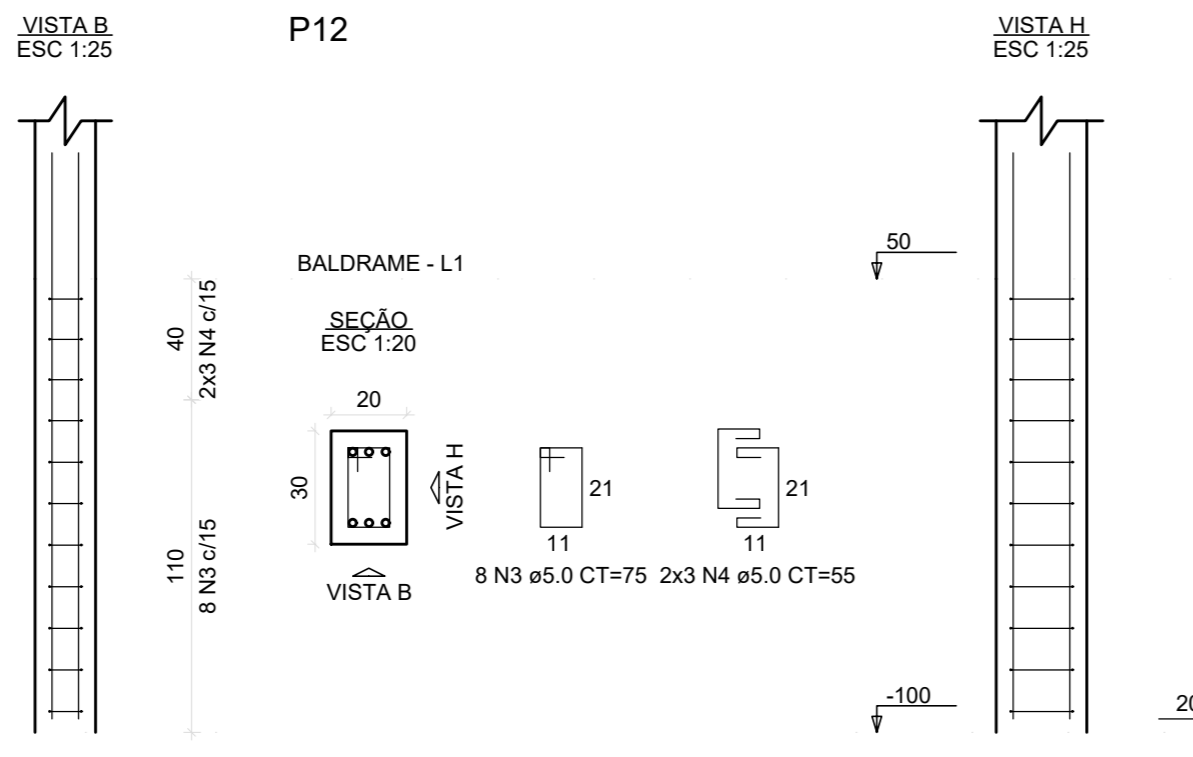
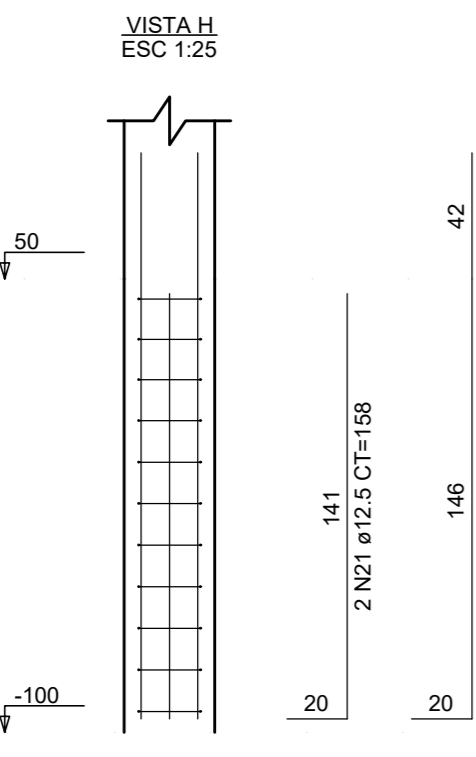
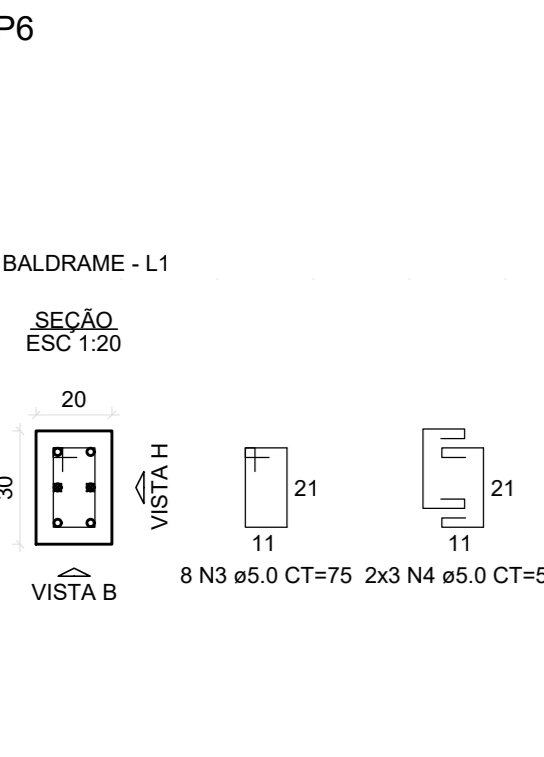
RELAÇÃO DO AÇO

CAO	N	DIAM (mm)	QUANT	C.UNIT (cm)	C.TOTAL (cm)
3M1	P3	Ø7	30	55	1650
P6	P6	Ø7	24	45	1080
6P9	2P11	Ø7	119	100	9000
P13	2P14	Ø7	95	55	5225
P16	P19	Ø7	154	26	4004
P23	P27	Ø7	123	95	11685
P38	2P40	Ø7	90	65	5850
3M1	3M7	Ø7	128	99	12672
8xS12	S13	Ø7	111	129	14319
8xS16	S42	Ø7	85	111	9435
			8	8.0	64
			9	8.0	72
			10	8.0	80
			11	8.0	88
			12	8.0	96
			13	8.0	104
			14	8.0	112
			15	8.0	120
			16	10.0	160
			17	10.0	170
			18	10.0	180
			19	12.5	156
			20	12.5	166
			21	12.5	176
			2	8.0	64
			3	8.0	72
			4	8.0	80
			5	8.0	88
			6	8.0	96
			7	8.0	104
			8	8.0	112
			9	8.0	120
			10	8.0	128
			11	8.0	136
			12	8.0	144
			13	8.0	152
			14	8.0	160
			15	8.0	168
			16	8.0	176
			17	8.0	184
			18	8.0	192
			19	8.0	200
			20	8.0	208
			21	8.0	216

RESUMO DO AÇO

CAO	DIAM (mm)	C.TOTAL (m)	QUANT + 0% (Barras)	PESO + 0% (kg)
CAO50	8.0	1190	100	489.5
CAO60	10.0	163.9	14	101
CAO70	12.5	387.7	30	344.5
CAO80	5.0	386.6	33	59.9
PESO TOTAL (kg)				954.9
CAO	91x1			

Volume de concreto (C-30) = 3.42 m³
Volume de concreto (C-25) = 18.28 m³
Área de forma = 104.85 m²



VISTOAPROVAÇÃO:

Obra: **AMPLIAÇÃO EMEI BRILHO DE INFÂNCIA**

Local: Avenida Benjamin Dorr, nº 75, Bairro Centro, Marques de Souza/RS

Projeto: **DETALHAMENTO SAPATAS**

Contratante: Município de Marques de Souza/RS

Contratado: SAMIR MARCOS BATTISTI Engenharia Civil - CREA-RS 104861-D

Projeto: Prof. M. de Souza 2022: Ampliação EMEI

Scale: escala 1:50

Stamp: SAMIR MARCOS BATTISTI, SAMB, CREA-RS 104861-D, 06